

Dichotomous Key Practice

1. Fig. 1.1 shows four insects.

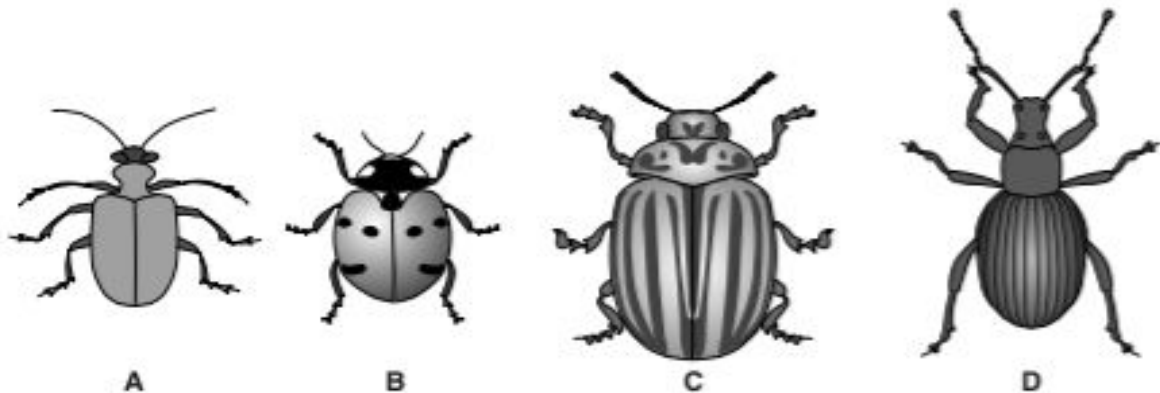


Fig. 1.1

- (a) State **one** feature of the insects shown in Fig. 1.1 that is a characteristic of this group.

.....[1]

- (b) Use the key to identify the four insects.

Write the name of each insect in the correct box in Table 1.1.

key		name of insect
1	(a) body has stripes (b) body has no stripes	go to 2 go to 3
2	(a) head is long and narrow (b) head is wide and rounded	<i>Otiorhynchus</i> <i>Leptinotarsa</i>
3	(a) antennae are longer than width of head (b) antennae are shorter than width of head	<i>Lilioceris</i> <i>Coccinella</i>

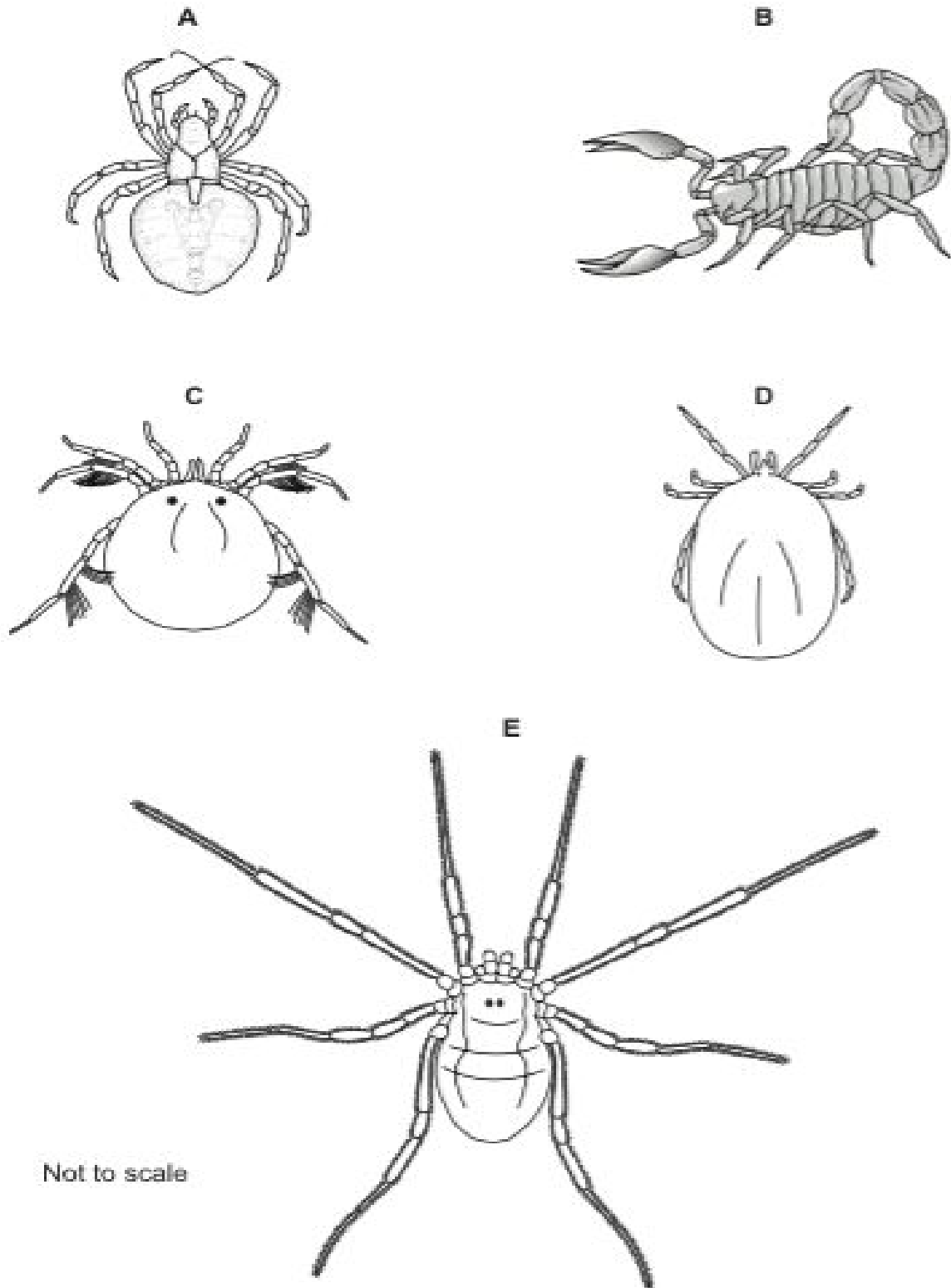
Table 1.1

insect	name of insect
A	
B	
C	
D	

[3]

[Total: 4]

2. Fig. 1.1 shows five arthropods, each with four pairs of legs.



Not to scale

Fig. 1.1

(a) These five arthropods all belong to the same group.

To which group of arthropods do they all belong?

Tick (✓) **one** box to show your answer.

arachnids	<input type="checkbox"/>
crustaceans	<input type="checkbox"/>
insects	<input type="checkbox"/>
myriapods	<input type="checkbox"/>

[1]

(b) Use the key to identify each of these arthropods.

Write the name of each animal in the correct box in Table 1.1.

Key

	name of arthropod
1 (a) legs with hairs (b) legs without hairs	go to 2 go to 3
2 (a) legs with small groups of hairs (b) legs hairy all over	<i>Hydrachna</i> <i>Oligolophus</i>
3 (a) body clearly has two main regions (b) body seems to have only one main region	go to 4 <i>Ixodes</i>
4 (a) body clearly segmented, pincers present (b) body with no segments, no pincers	<i>Buthus</i> <i>Araneus</i>

Table 1.1

animal	name of arthropod
A	
B	
C	
D	
E	

[4]

[Total: 5]