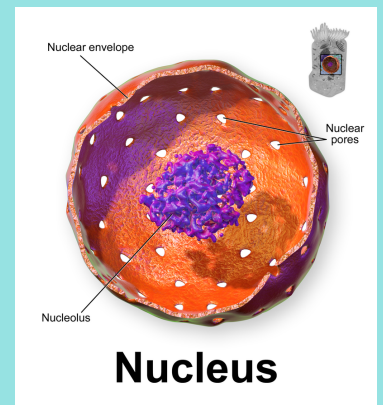


CELL STRUCTURES

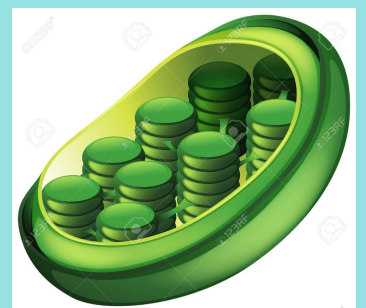
NUCLEUS

- size- relatively large structure
- found in both plant and animal cells
- made up of DNA
- function- brain of the cell



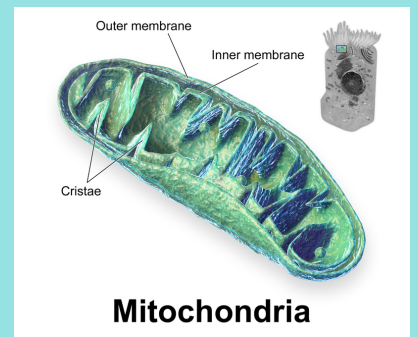
CHLOROPLASTS

- size: large organelles
- found in plant cells
- function: photosynthesis



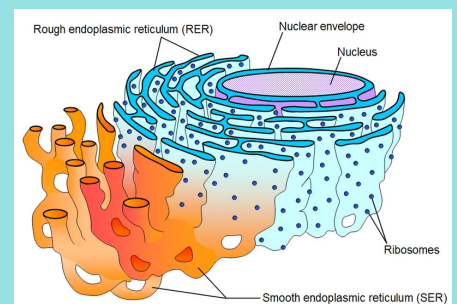
MITOCHONDRIA

- size : 1-7 μ m in length 0.5-1 μ m in diameter
- found in both plant and animal cells
- function: controls the entry and exit of substances



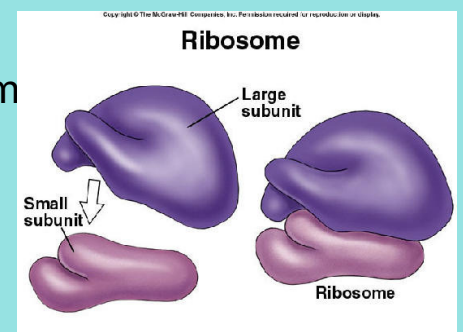
ENDOPLASMIC RETICULUM

- size: large
- found in both plant and animal cells
- functions: provides surface for protein synthesis, pathway for transport of materials, smooth er produces and stores lipids, synthesizes glycogen in some cells , forms transport vesicles



RIBOSOMES

- size: 22 nm in diameter (eukaryotic) 17 nm in diameter (prokaryotic)
- found in both animal and plant cells
- function: helps in protein synthesis



GOLGI BODY

- size: mid-sized
- found in both animal and plant cells
- functions: forms glycoproteins, produces secretory enzymes, secretes carbs, transports, stores, and modifies lipids, forms primary lysosomes

